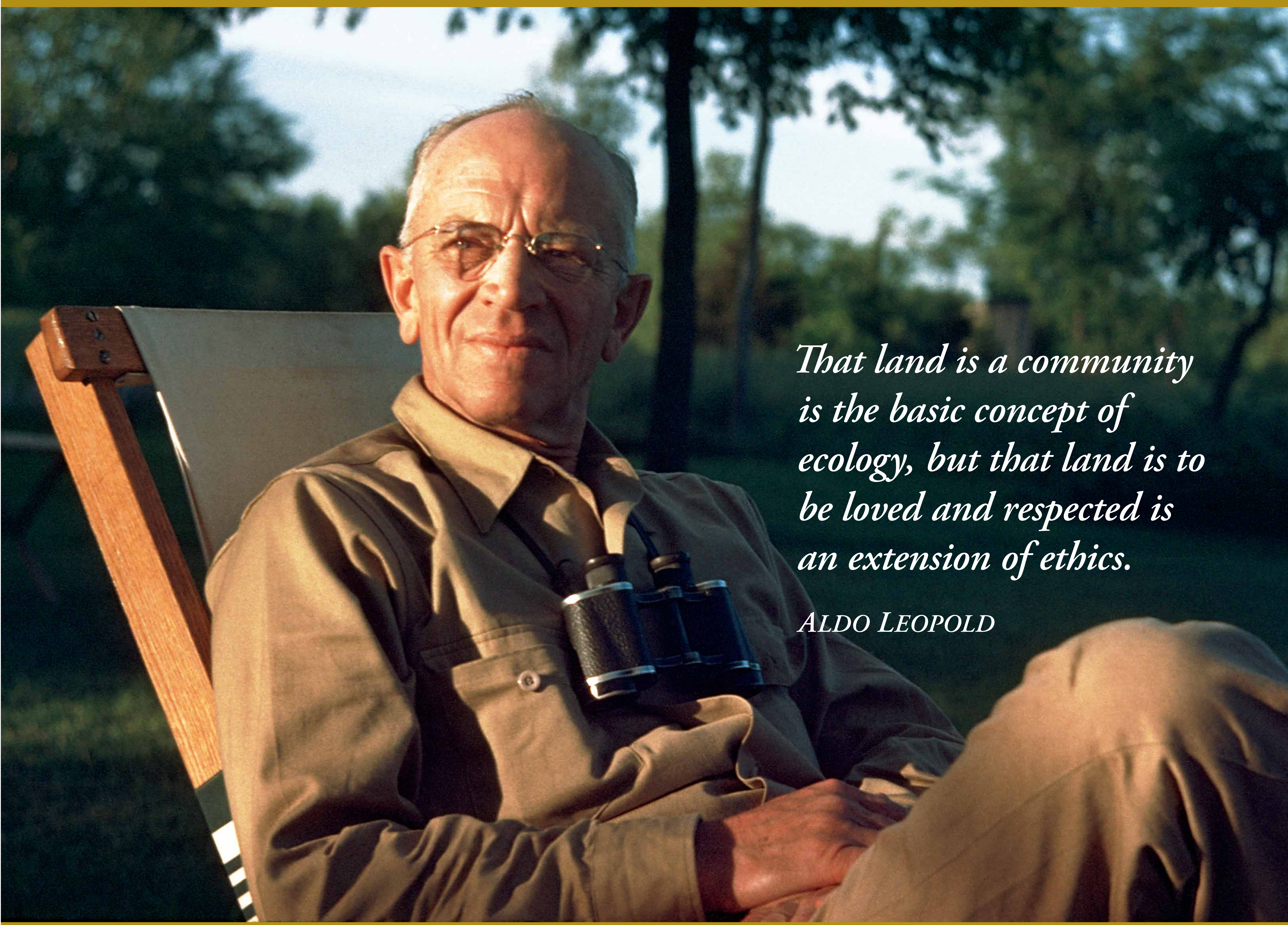


# Aldo Leopold...Forester, Conservationist, Educator, Writer and Philosopher



*That land is a community is the basic concept of ecology, but that land is to be loved and respected is an extension of ethics.*

ALDO LEOPOLD

## Aldo Leopold

Considered by many as the father of wildlife management and of the United States' wilderness system, Aldo Leopold was a forester, conservationist, educator, writer, philosopher and outdoor enthusiast.

One of Aldo Leopold's most significant contributions was his vision of a "Land Ethic" expressed in his classic book on conservation, *A Sand County Almanac*.

## The Land Ethic

Leopold understood that ethics direct individuals to cooperate with each other for the mutual benefit of all. One of his philosophical achievements was the idea that this "community" should be enlarged to include non-human elements such as soils, waters, plants, and animals, "or collectively: the land."

*That land is a community is the basic concept of ecology, but that land is to be loved and respected is an extension of ethics.*

This recognition, according to Leopold, implies individuals play an important role in protecting and preserving the health of this expanded definition of a community.

*A land ethic, then, reflects the existence of an ecological conscience, and this in turn reflects a conviction of individual responsibility for the health of land.*

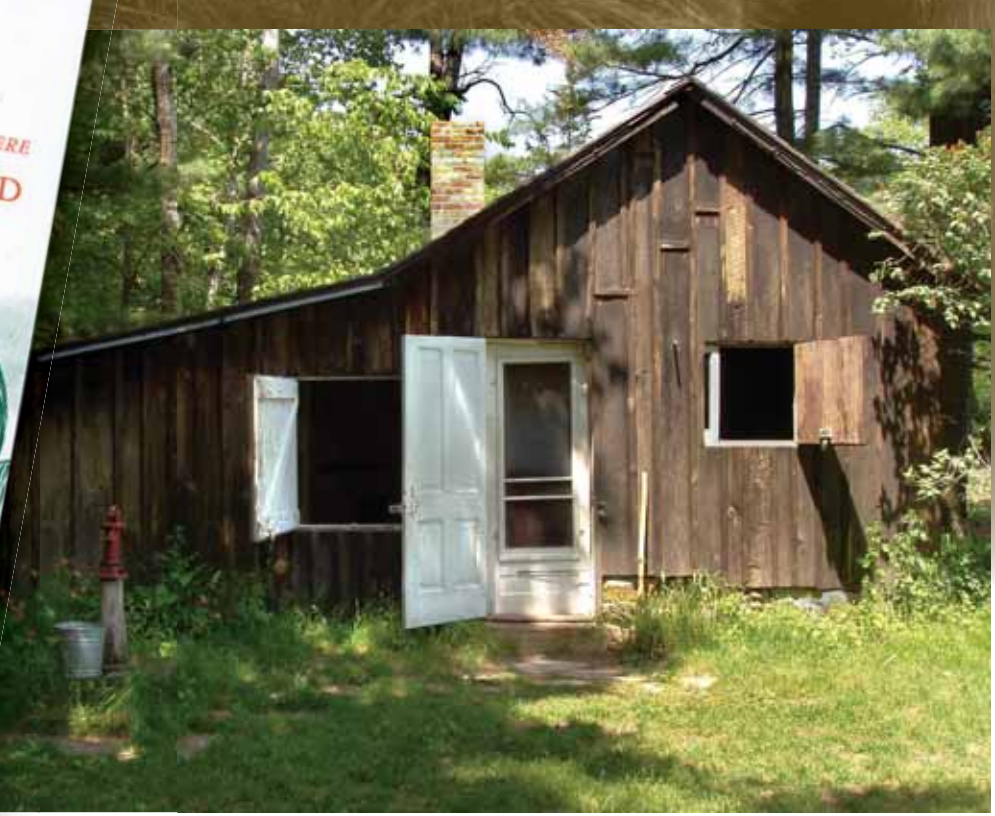
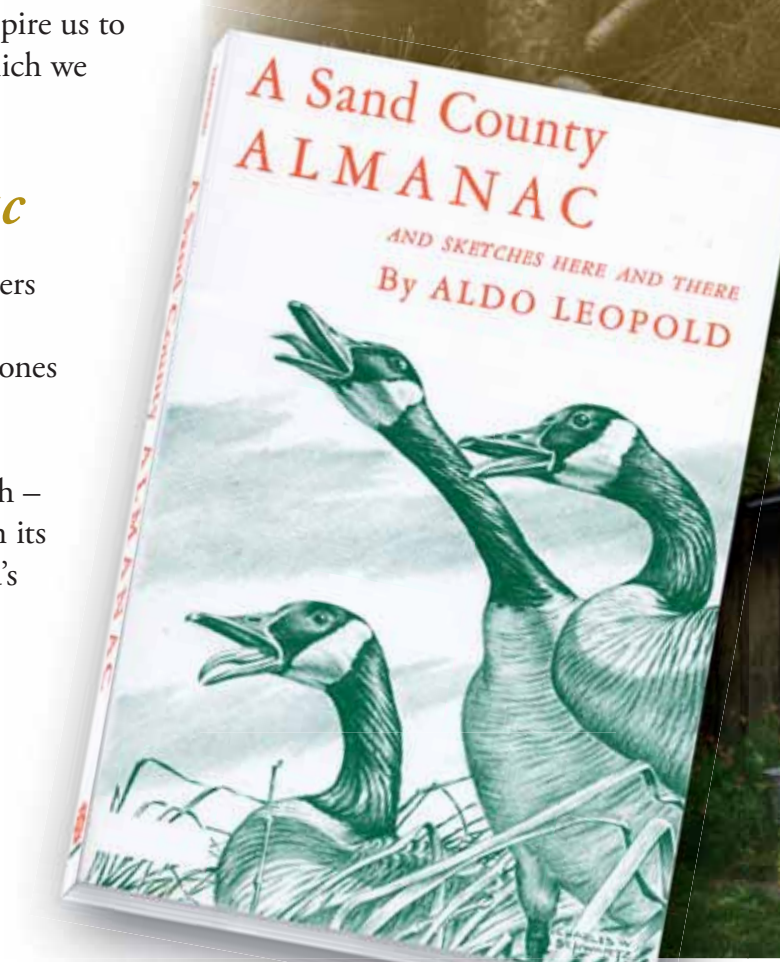
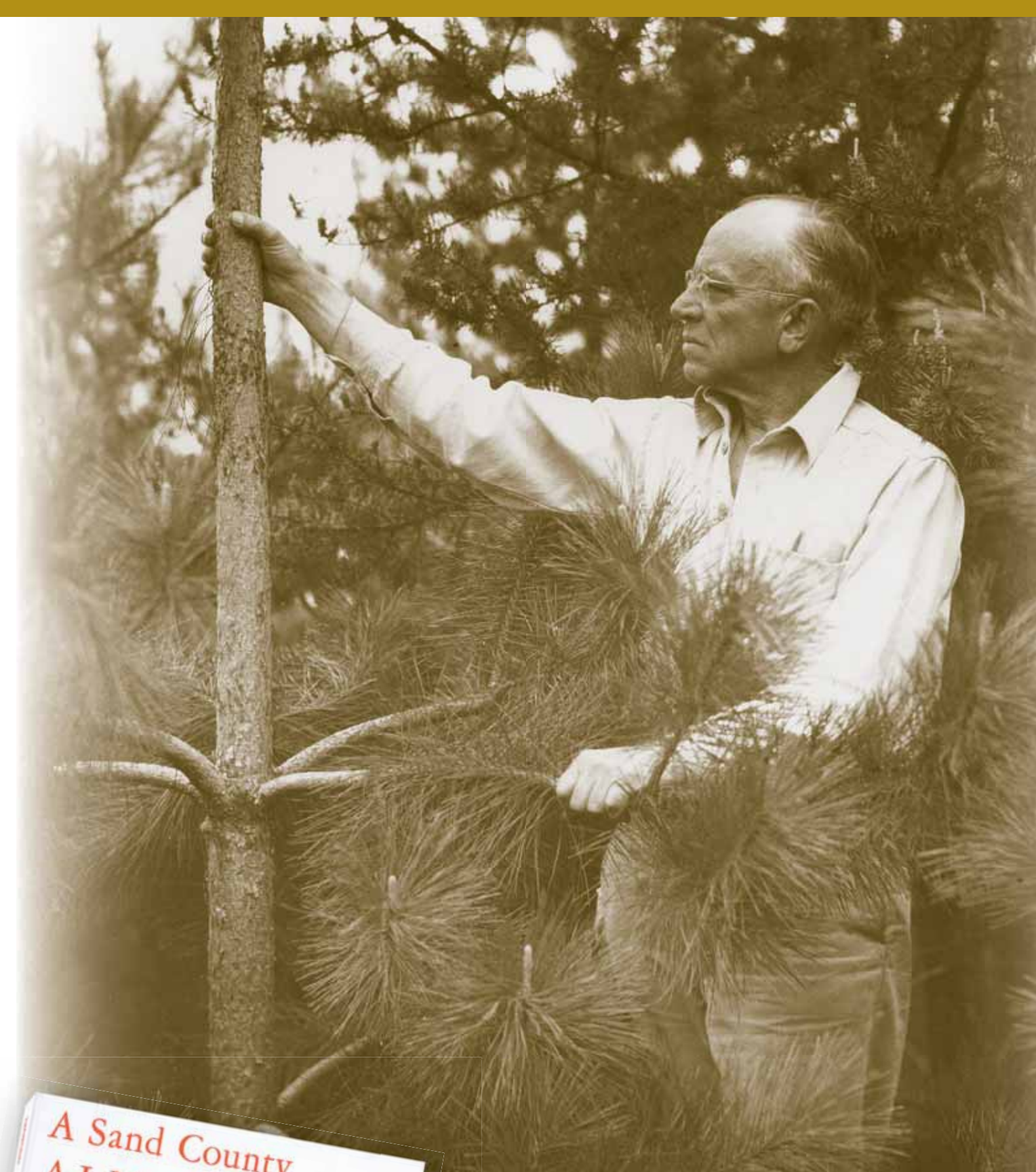
Leopold's legacy continues to inform and inspire us to see the natural world "as a community to which we belong."

## A Sand County Almanac

Admired by an ever-growing number of readers and imitated by hundreds of writers, *A Sand County Almanac* serves as one of the cornerstones for modern conservation science, policy, and ethics. First published by Oxford University Press in 1949 – one year after Leopold's death – it has become a classic in the field, equaled in its lasting stature only by Henry David Thoreau's *Walden*.

While Aldo Leopold was writing in the 1940's he could not have imagined the far-reaching impact his book would have. Over two million copies have been printed and it has been translated into nine languages.

*There are some who can live without wild things, and some who cannot. These essays are the delights and dilemmas of one who cannot.*



In 1935, the Leopold family purchased a worn-out sand farm and began one of the first recorded efforts at returning "unhealthy" land back to a natural, balanced, and ecologically healthy state. They planted thousands of pine trees and began one of the earliest known native prairie restorations on this site. Today the Shack and Farm still stand as a living symbol of the Land Ethic in practice.



1887  
Aldo Leopold, born in Burlington, Iowa on January 11, eldest of four children of Carl and Clara Leopold.



1909  
Graduates Yale School of Forestry and joins the U.S. Forest Service. Assigned as an assistant on the Apache National Forest in southeastern Arizona.



1912  
Marries Estella Bergere of Santa Fe on October 9. Five children: Starker, 1913; Luna, 1915; Nina, 1917; Carl, 1919; Estella, 1927.



1922  
Submits a proposal that results in the Gila National Forest becoming the first designated Wilderness Area in the United States (1924).



1924  
Accepts transfer to U.S. Forest Products Laboratory in Madison, Wisconsin and becomes an associate director.



1933  
Appointed chair of the new game management department at the University of Wisconsin-Madison. Works with graduate students to effectively found the entire field of wildlife ecology and management.



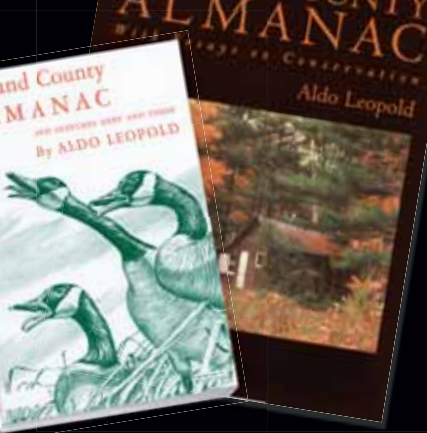
1935  
Purchases the Wisconsin River property now known as the "Shack and Farm" that would be the setting for many of the essays in *A Sand County Almanac*.



1947  
Submits the manuscript of his book "Great Possessions," later to become *A Sand County Almanac*, to Oxford University Press, which notifies him of acceptance on April 14, 1948.



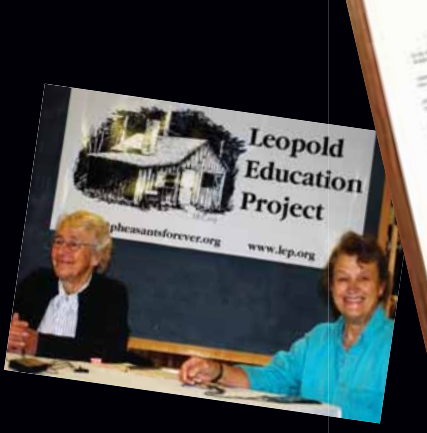
1948  
Just one week after learning of his manuscript's acceptance, Leopold dies of a heart attack on April 21 while helping to fight a grass fire on a neighbor's farm. Burial in Burlington, Iowa.



1949  
"Great Possessions" published as *A Sand County Almanac*. Leopold's children complete final editing, lead by his son Luna.



1982  
Aldo Leopold's children establish the Aldo Leopold Foundation in response to the growing interest in their father's legacy.



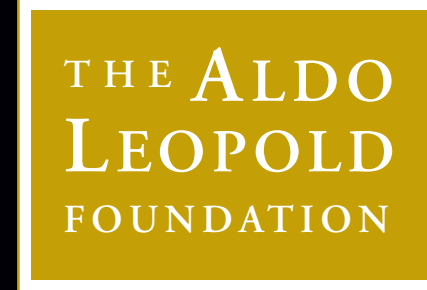
1992  
The Leopold Education Project begins national distribution, through Pheasants Forever, of an innovative conservation and environmental education curriculum based on Leopold's writings and ideas.



2004  
Governor James Doyle signs legislation making the first weekend in March Aldo Leopold Weekend across Wisconsin.



2006  
Construction begins on Aldo Leopold Legacy Center, an educational and research facility near the Shack in Baraboo, Wisconsin.



*Fostering the Land Ethic through the legacy of Aldo Leopold*

[www.aldoleopold.org](http://www.aldoleopold.org)